

HOSPITALITY & PLASTIC STORAGE



Hospitality Containers	112-114
Catering & Kitchenware	115-118
Hospitality & Cleaning Equipment.....	119-122
Rotomoulded Tubs.....	123
Bins & Dollies	124-125
Storage Containers.....	126-127
Stack, Nest & Ventilated Crates	128-133
Buckets & Bulk Bins	134-136
Longspan Shelving & Action Racks	137
Workbenches & Lockers.....	138-140

Trust

GREY
WHITE
RED
YELLOW
GREEN
BLUE




RT1011
THOR® Round Container

Capacity	Dimensions
38 Litre	400 x 440mm

Trust

GREY
WHITE
RED
YELLOW
GREEN
BLUE




RT1010
THOR® Round Container

Capacity	Dimensions
60 Litre	470 x 545mm

Trust

GREY
WHITE
RED
YELLOW
GREEN
BLUE



RT1012
THOR® Round Container

Capacity	Dimensions
75 Litre	490 x 570mm

Trust

GREY
BEIGE
GREEN
BLUE



RT1215
Svelte® Container

Capacity	Dimensions
46 Litre	499 x 249 x 630mm

Trust

GREY
BLACK
BEIGE
BROWN
GREEN
BLUE



RT1211
Svelte® Container

Capacity	Dimensions
60 Litre	570 x 272 x 632mm

Trust

GREY
BLACK
BEIGE
BROWN
GREEN
BLUE




RT1213
Svelte® Container

Capacity	Dimensions
87 Litre	570 x 272 x 756mm

Trust

GREY
WHITE
RED
YELLOW
GREEN
BLUE



RT1013
THOR® Round Container

Capacity	Dimensions
121 Litre	560 x 700mm

Trust

GREY
WHITE
RED
YELLOW
GREEN
BLUE




RT1014
THOR® Round Container

Capacity	Dimensions
166 Litre	610 x 800mm

Trust

GREY



RT1015
THOR® Round Container

Capacity	Dimensions
208 Litre	670 x 840mm

Trust

GREEN
BLUE




RT1214
Svelte® Recycling Container

Capacity	Dimensions
87 Litre	570 x 272 x 756mm

Trust

GREEN



RT1641
Svelte® Bottle and Can Recycling Top

Model	Dimensions
RT1641	523 x 288 x 67mm

Trust

BLUE




RT1642
Svelte® Paper Recycling Top

Model	Dimensions
RT1642	523 x 288 x 67mm

Trust

GREY
WHITE
RED
YELLOW
GREEN
BLUE




RT1610 - 1615
THOR® Round Lids
To suit RT1010/RT1011/RT1012/RT1013/RT1014/RT1015

Suit
RT1010/RT1011/RT1012/RT1013/RT1014/RT1015

Trust

GREY




RT1623
THOR® Funnel Lid
To suit RT1013

Suit	Dimensions
RT1013	568 x 129mm

Trust

BLACK




RT1819
THOR® Universal Drum Dolly
Can easily transport steel drums.

Model	Dimensions
RT1819	619 x 181mm

Trust

L/GREY



RT1643
Svelte® Handle Top

Model	Dimensions
RT1643	523 x 288 x 70mm

Trust

GREY
BLACK
GREEN
BLUE



RT1644
Svelte® Swing Lid

Model	Dimensions
RT1644	523 x 288 x 115mm

Trust

BLACK




RT1645
Svelte® Connect Valve Style Lid

Model	Dimensions
RT1645	548 x 325 x 40mm

Trust

BLACK




RT1811
THOR® Round Dolly
To suit RT1010/RT1012/RT1013/RT1014/RT1015

Model	Dimensions
RT1811	464 x 168mm

Trust

BLACK




RT1813
THOR® Quiet Round Dolly
To suit RT1012/RT1013/RT1014/RT1015

Model	Dimensions
RT1813	464 x 168mm

Trust

BLACK



RT1814
Svelte® Dolly
To suit RT1211/RT1213

Model	Dimensions
RT1814	516 x 290 x 260mm

Trust

BLACK



RT1815
Svelte® Double-Compartment Dolly
To suit RT1211/RT1213

Model	Dimensions
RT1814	582 x 517 x 240mm

Trust

BLACK




RT1816
Svelte® Tri-Compartment Dolly
To suit RT1211/RT1213

Model	Dimensions
RT1814	873 x 517 x 240mm

Trust

BLACK



RT1817
Svelte® Four-Compartment Dolly
To suit RT1211/RT1213

Model	Dimensions
RT1814	1164 x 517 x 240mm

Trust

BLACK
GREY
WHITE
YELLOW
GREEN
BLUE

RT1302
Svelte® Step-on Container

Capacity	Dimensions
50 Litre	307 x 507 x 721mm

Trust

BLACK
GREY
WHITE
YELLOW
GREEN
BLUE

RT1303
Svelte® Step-on Container

Capacity	Dimensions
68 Litre	347 x 544 x 782mm

Trust

BLACK
GREY
WHITE
YELLOW
GREEN
BLUE

RT1304
Svelte® Step-on Container

Capacity	Dimensions
90 Litre	379 x 601 x 812mm

Trust

WHITE
YELLOW
BLUE

RT1253
Step-on Container

Capacity	Dimensions
45 Litre	413 x 400 x 600mm

Trust

WHITE
YELLOW
BLUE

RT1254
Step-on Container

Capacity	Dimensions
68 Litre	502 x 410 x 673mm

Trust

WHITE
YELLOW
BLUE

RT1255
Step-on Container

Capacity	Dimensions
87 Litre	502 x 447 x 826mm

Trust

GREY
WHITE
RED

RT1231
THOR® Square Container

Capacity	Dimensions
106 Litre	546 x 546 x 572mm

Trust

GREY

RT1661
THOR® Square Lid

Suit	Dimensions
RT1231	559 x 559 x 51mm

Trust

BLACK

RT1812
THOR® Square Dolly

Suit	Dimensions
RT1231	438 x 159mm

Trust

GREY
CLEAR
WHITE
RED
YELLOW
BLUE

RT3011
THOR® Tote Food Storage Box with Lid

Capacity	Dimensions
53 Litre	708 x 434 x 272mm

Trust

GREY
CLEAR
WHITE
RED
YELLOW
BLUE

RT3012
THOR® Large Tote Food Storage Box with Lid

Capacity	Dimensions
75 Litre	708 x 434 x 384mm

Trust

BLACK

RT4483
THOR® Tote Trolley

Suit	Dimensions
RT3011/RT3012	630 x 435 x 185mm

Trust

WHITE

Scrapper

Model	Dimensions
RT8511	240mm
RT8512	340mm
RT8513	420mm

Trust

WHITE

Ice Scrapper

Model	Dimensions
RT8514	240mm

Trust

WHITE

Spoon-shaped Scrapper

Model	Dimensions
RT8515	240mm
RT8516	340mm
RT8517	420mm

Trust

WHITE

RT8411
Food Material Storage Bin

Capacity	Dimensions
80 Litre	743 x 334 x 755mm

Trust

WHITE

RT8412
Food Material Storage Bin

Capacity	Dimensions
100 Litre	743 x 394 x 755mm

Trust

WHITE

RT8413
Food Material Storage Bin

Capacity	Dimensions
120 Litre	743 x 457 x 755mm

Trust

CLEAR

Measuring Spoon for Food Storage Bin

Model	Capacity	Dimensions
RT8414	1 Litre	274 x 122 x 120mm
RT8433	0.12 Litre	187 x 86 x 38mm
RT8434	0.48 Litre	117 x 130 x 133mm

Trust

WHITE

Food Material Storage Bin Lid

Model	Suit	Dimensions
RT8415	RT8411	737 x 307 x 48mm
RT8416	RT8412	737 x 368 x 48mm
RT8417	RT8413	737 x 437 x 48mm

Trust

BLACK

Comdiment Dispenser with Inserts

Model	Insert Capacity	Dimensions
RT8441	3 x 0.9 Litre	498 x 159 x 95mm
RT8442	4 x 0.7 Litre	498 x 159 x 95mm
RT8443	6 x 0.5 Litre	498 x 159 x 95mm

Trust

GREY

RT8231
Cutlery Bin

Compartment No.	Dimensions
4	540 x 292 x 95mm

Trust

GREY

RT8211
Bus/Utility Tote Box

Capacity	Dimensions
17 Litre	500 x 375 x 127mm

Trust

GREY

RT8216
Bus/Utility Tote Box Lid

Suit	Dimensions
RT8211	511 x 387 x 15mm



RT8311 CLEAR
RT8321 WHITE

RT8311 / RT8321
Round Storage Container

Capacity	Dimensions
1.9 Litre	216 x 102mm



RT8312 CLEAR
RT8322 WHITE

RT8312 / RT8322
Round Storage Container

Capacity	Dimensions
3.8 Litre	216 x 197mm



RT8313 CLEAR
RT8323 WHITE

RT8313 / RT8323
Round Storage Container

Capacity	Dimensions
5.7 Litre	254 x 194mm



RT8314 CLEAR
RT8324 WHITE

RT8314 / RT8324
Round Storage Container

Capacity	Dimensions
7.6 Litre	254 x 270mm



RT8315 CLEAR
RT8325 WHITE

RT8315 / RT8325
Round Storage Container

Capacity	Dimensions
11.4 Litre	333 x 206mm



RT8316 CLEAR
RT8326 WHITE

RT8316 / RT8326
Round Storage Container

Capacity	Dimensions
17.0 Litre	333 x 302mm



RT8317 CLEAR
RT8327 WHITE

RT8317 / RT8327
Round Storage Container

Capacity	Dimensions
20.8 Litre	333 x 356mm



RT8318 CLEAR
RT8328 WHITE

RT8318 / RT8328
Round Storage Container with Bail

Capacity	Dimensions
20.8 Litre	333 x 356mm



YELLOW

RT8331
Round Storage Container Lid
Lid for RT8311/RT8312/RT8321/RT8322

Suit	Dimensions
1.9L / 3.8L Containers	222 x 22mm



WHITE
YELLOW

RT8332
Round Storage Container Lid
Lid for RT8313/RT8314/RT8323/RT8324

Suit	Dimensions
5.7L / 7.6L Containers	260 x 25mm



WHITE
YELLOW

RT8333
Round Storage Container Lid
Lid for RT8315/RT8316/RT8317/RT8318/
RT8325/RT8326/RT8327/RT8328

Suit	Dimensions
11.4L / 17.0L / 20.8L Containers	340 x 30mm



CLEAR
BROWN
YELLOW
WHITE
GREEN
BLUE

RT8520
LLDPE Chopping Board

Thickness	Dimensions
12mm	300 x 230 x 12mm



RT8521
LLDPE Chopping Board

Thickness	Dimensions
15mm	508 x 308 x 15mm



RED
BROWN
YELLOW
WHITE
GREEN
BLUE

RT8524
LLDPE Chopping Board

Thickness	Dimensions
15mm	606 x 455 x 15mm



RED
BROWN
YELLOW
WHITE
GREEN
BLUE

RT8525
LLDPE Chopping Board

Thickness	Dimensions
20mm	508 x 308 x 20mm



RED
BROWN
YELLOW
WHITE
GREEN
BLUE

RT8526
LLDPE Chopping Board

Thickness	Dimensions
15mm	455 x 308 x 15mm



RED
BROWN
YELLOW
WHITE
GREEN
BLUE

RT8527
LLDPE Chopping Board

Thickness	Dimensions
20mm	508 x 455 x 20mm



RED
BROWN
YELLOW
WHITE
GREEN
BLUE

RT8528
LLDPE Chopping Board

Thickness	Dimensions
20mm	606 x 606 x 20mm



RED
BROWN
YELLOW
WHITE
GREEN
BLUE

RT8522
Chopping Boards Set (6 Colours Pack)

Thickness	Dimensions
15mm	508 x 308 x 15mm



SILVER

RT8523
Stainless Steel Chopping Board Holder

Slot Width	Dimensions
6 x 15mm	306 x 282 x 286mm



BLACK

RT8529
Plastic Chopping Board Holder

Slot Width	Dimensions
6 x 25mm	263 x 352 x 216mm



CLEAR

RT8265 / RT8266
Cold Drinking Jugs

Model	Capacity
RT8265	2 Litre
RT8266	3.8 Litre



BROWN

PP Non-slip Round Tray

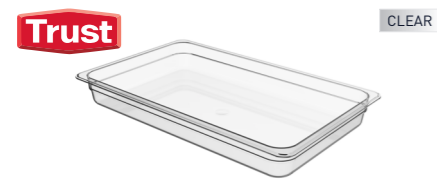
Model	Size	Dimensions
RT8281	Small	Dia. 275mm
RT8282	Medium	Dia. 355mm
RT8283	Large	Dia. 406mm
RT8284	X Large	Dia. 450mm



BROWN

PP Non-slip Rectangle Tray

Model	Size	Dimensions
RT8285	Small	350 x 255mm
RT8286	Medium	405 x 305mm
RT8287	Large	455 x 365mm
RT8288	X Large	510 x 380mm



Full Size Cold Food Pan
PolyCarbonate, BPA-free.
Size: 530 x 325mm

Model	Capacity	Depth
RT8911-CLR	8.5 Litre	65mm
RT8912-CLR	13.0 Litre	100mm
RT8913-CLR	19.5 Litre	150mm
RT8914-CLR	25.7 Litre	200mm



1/2 Size Cold Food Pan
PolyCarbonate, BPA-free.
Size: 325 x 265mm

Model	Capacity	Depth
RT8921-CLR	3.8 Litre	65mm
RT8922-CLR	6.0 Litre	100mm
RT8923-CLR	8.8 Litre	150mm
RT8924-CLR	10.8 Litre	200mm



1/3 Size Cold Food Pan
PolyCarbonate, BPA-free.
Size: 325 x 176mm

Model	Capacity	Depth
RT8931-CLR	2.5 Litre	65mm
RT8932-CLR	3.8 Litre	100mm
RT8933-CLR	5.1 Litre	150mm
RT8934-CLR	7.0 Litre	200mm



1/4 Size Cold Food Pan
PolyCarbonate, BPA-free.
Size: 265 x 162mm

Model	Capacity	Depth
RT8941-CLR	1.6 Litre	65mm
RT8942-CLR	2.4 Litre	100mm
RT8943-CLR	3.8 Litre	150mm



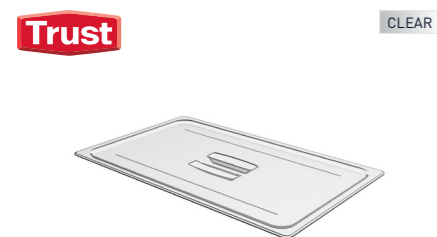
1/6 Size Cold Food Pan
PolyCarbonate, BPA-free.
Size: 176 x 162mm

Model	Capacity	Depth
RT8951-CLR	1.1 Litre	65mm
RT8952-CLR	1.6 Litre	100mm
RT8953-CLR	2.4 Litre	150mm



1/9 Size Cold Food Pan
PolyCarbonate, BPA-free.
Size: 176 x 108mm

Model	Capacity	Depth
RT8961-CLR	0.6 Litre	65mm
RT8962-CLR	0.8 Litre	100mm



Full Size Cold Food Pan Lid with Handle
PolyCarbonate, BPA-free.
Lid for RT8911, RT8912, RT8913, RT8914

Model	Dimensions
RT8915-CLR	530 x 325mm



1/2 Size Cold Food Pan Lid with Handle
PolyCarbonate, BPA-free.
Lid for RT8921, RT8922, RT8923, RT8924

Model	Dimensions
RT8925-CLR	325 x 265mm



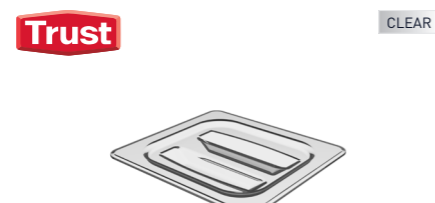
1/3 Size Cold Food Pan Lid with Handle
PolyCarbonate, BPA-free.
Lid for RT8931, RT8932, RT8933, RT8934

Model	Dimensions
RT8935-CLR	325 x 176mm



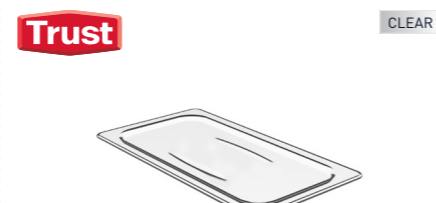
1/4 Size Cold Food Pan Lid with Handle
PolyCarbonate, BPA-free.
Lid for RT8941, RT8942, RT8943

Model	Dimensions
RT8944-CLR	265 x 162mm



1/6 Size Cold Food Pan Lid with Handle
PolyCarbonate, BPA-free.
Lid for RT8951, RT8952, RT8953

Model	Dimensions
RT8954-CLR	176 x 162mm



1/9 Size Cold Food Pan Flat Lid
PolyCarbonate, BPA-free.
Lid for RT8961, RT8962

Model	Dimensions
RT8963	176 x 108mm



Large Food Containers
For delivering and storing raw food materials.

Model	Size	Load Capacity
RT4710	1160 x 720 x 760mm	135kg
RT4711	1145 x 750 x 880mm	180kg



RT8613 Food Storage Rack/Cart

Tray No.	Dimensions
17	603 x 473 x 1724mm



RT4492 Goods Shelves

Capacity	Dimensions
900 kg	1220 x 610 x 305mm



RT8014 Microban® High Chair

Size	Accessories
636 x 583 x 768mm	RT8013 / RT8015



RT8013 Microban® High Chair Tray

Suit	Size
RT8014 High Chair	424 x 300 x 55mm



RT8015 Castor Wheel Kit

Suit	Description
RT8014 High Chair	Castor Wheel Kit



RT5021 GRANDMAID® House Keeping Cart

Model	Dimensions
RT5021	1524 x 559 x 1270mm



RT5022 GRANDMAID® House Keeping Cart with Doors

Model	Dimensions
RT5022	1524 x 559 x 1270mm



RT5023 GRANDMAID® House Keeping Cart with Doors & Protective Security Hood

Model	Dimensions
RT5023	1524 x 559 x 1570mm



RT5031 GRANDMAID® Fine House Keeping Cart

Model	Dimensions
RT5031	1240 x 559 x 1230mm



RT5051 GRANDMAID® Cruise House Keeping Cart

Model	Dimensions
RT5051	1240 x 510 x 1090mm



RT5226 GRANDMAID® Side Press Combo Mop Bucket

Capacity	Dimensions
33 Litre	515 x 406 x 927mm



RT7114 Wet Floor Safety Sign

Description	Dimensions
"CAUTION Wet Floor"	660 x 279 x 305mm



X-Type Linen Cart

Model	Capacity	Dimensions
RT5041	170 Litre	705 x 635 x 876mm
RT5042	340 Litre	940 x 660 x 1010mm



Cloth/Straw Bag
To suit RT5041/RT5042

Model	Capacity	Dimensions
RT5043	170 Litre	655 x 585 x 675mm
RT5044	340 Litre	840 x 585 x 860mm



RT6913 Predator® Upright Dust Pan

Feature	Dimensions
with Cover without Hook	332 x 144 x 958mm



RT6914 Predator® Upright Dust Pan

Feature	Dimensions
without Cover and Hook	332 x 139 x 958mm



RT6916 Predator® Dry/Wet Dust Pan

Feature	Dimensions
with Cover without Hook	443 x 272 x 1116mm



RT5011 GRANDMAID® Cleaning Cart

Description	Dimensions
Cleaning Cart	1168 x 552 x 975mm



RT5264 Quadrate Bucket

Suit to	Capacity	Dimensions
RT5011	9.5 Litre	358 x 218 x 205mm



RT5265 Quadrate Bucket

Suit to	Capacity	Dimensions
RT5011	4.7 Litre	213 x 177 x 215mm



Dust Pan

Model	Size	Dimensions
RT6923	Heavy-duty	311 x 210 x 67mm
RT6924	Extra Large	406 x 375 x 137mm
RT6925	Jumbo	559 x 457 x 197mm



RT6926 Heavy-duty Dust Pan with Brush

Feature	Dimensions
with Counter Brush	311 x 210 x 67mm



Steel Heavy-duty Dust Pan

Model	Size	Dimensions
RT6927	Heavy-duty	305 x 345 x 75mm
RT6928	Heavy-duty	400 x 365 x 125mm



RT5252 Round Bucket

Capacity	Dimensions
13 Litre	305 x 286mm



RT5253 Round Bucket

Capacity	Dimensions
9 Litre	260 x 240mm



RT6763 Three-side Shoe Brush

Brush	Dimensions
PP Brush Wires	500 x 300 x 195mm



RT6929 Step & Sweep Dust Pan

Feature	Dimensions
Step-on Design	370 x 330 x 125mm



RT6893 Heavy-Duty Wooden Floor Sweep

Brush	Dimensions
PP Bristles	406 x 90mm



RT6996 Nipper

Clamp	Dimensions
Soft Material	450mm



RT6621 Angle Broom

Feature	Height
Angle Brush with Handle, PET Fill	190mm



RT6911 Predator® Upright Dust Pan

Feature	Dimensions
with Hook	323 x 139 x 958mm



RT6912 Predator® Upright Dust Pan

Feature	Dimensions
with Cover and Hook	332 x 144 x 958mm



RT6934 Nozzle For Spray Bottle

Capacity	Dimensions
3 ml	125 x 33 x 340mm



Spray Bottle

Model	Capacity	Dimensions
RT6952	650 ml	89 x 200mm
RT6935	950 ml	89 x 250mm



Pneumatic Sprayers

Model	Capacity	Dimensions
RT6936	1 Litre	311 x 210 x 67mm
RT6937	1.5 Litre	406 x 375 x 137mm
RT6938	2 Litre	559 x 457 x 197mm



Scrapers

Model	Scraper Size	Dimensions
RT6981	80mm	213 x 76 x 24mm
RT6982	40mm	203 x 40 x 24mm



Commercial Cleaning Maintenance Gloves

Model	Size	Dimensions
RT6983	Large	245 x 114mm
RT6984	Extra Large	245 x 118mm



RT6985
Professional Kneepad

Material	Dimensions
Perforated Neoprene	229 x 178 x 108mm



Storage Pallets

Model	Capacity	Dimensions
RT4501	90 Litre	1245 x 635 x 140mm
RT4502	185 Litre	1245 x 1245 x 140mm



RT4503
Slope for Storage Pallet

Suit to RT4501 / RT4502

Static Load	Dimensions
450kg	1219 x 838 x 159mm



RT1035
THOR® Step-on Rollout Container

Capacity	Dimensions
120 Litre	520 x 663 x 940mm



RT1036
THOR® Step-on Rollout Container

Capacity	Dimensions
190 Litre	621 x 728 x 1005mm



RT1037
THOR® Step-on Rollout Container

Capacity	Dimensions
240 Litre	645 x 760 x 1150mm



RT1038
THOR® Step-on Rollout Container

Capacity	Dimensions
360 Litre	727 x 949 x 1170mm



MGB80
Wheelie Bin

Capacity	External Dimensions
80 Litre	470 x 500 x 900mm



MGB120
Wheelie Bin

Capacity	Dimensions
120 Litre	470 x 500 x 900mm



MGB240
Wheelie Bin

Capacity	Dimensions
240 Litre	650 x 575 x 1000mm



REM130
Rectangular Rotomoulded Tank

Capacity	Dimensions
130 Litre	680 x 440 x 500mm



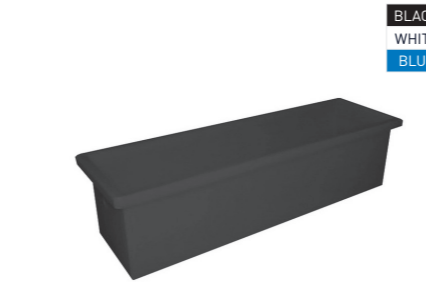
REM170
Rectangular Rotomoulded Tank

Capacity	Dimensions
170 Litre	680 x 440 x 650mm



REM180
Rectangular Rotomoulded Tank

Capacity	Dimensions
180 Litre	820 x 520 x 540mm



REM300
Rectangular Rotomoulded Tank

Capacity	Dimensions
300 Litre	1630 x 435 x 430mm



REM322
Rectangular Rotomoulded Tank

Capacity	Dimensions
320 Litre	915 x 610 x 610mm



REM422
Rectangular Rotomoulded Tank

Capacity	Dimensions
450 Litre	1220 x 610 x 610mm



REM500
Rectangular Rotomoulded Tank

Capacity	Dimensions (TOP)
500 Litre	1100 x 720 x 740mm



REM600
Rectangular Rotomoulded Tank

Capacity	Dimensions
600 Litre	1200 x 700 x 750mm



RL165
Rectangular Tank

Capacity	Dimensions
165 Litre	610 x 610 x 465mm



RL250
Rectangular Tank

Capacity	Dimensions
250 Litre	1030 x 510 x 495mm



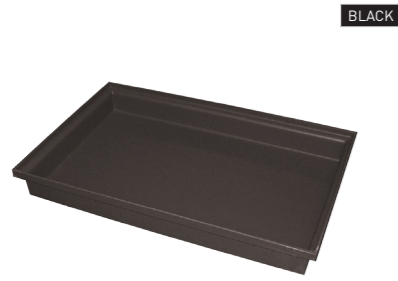
RL455
Rectangular Tank

Capacity	Dimensions
455 Litre	1300 x 710 x 660mm



RL690
Rectangular Tank

Capacity	Dimensions
690 Litre	1230 x 620 x 930mm



BLACK

REM180T
Food Grade Rotomoulded Tray

Capacity	Dimensions
25 Litre	813 x 517 x 103mm



BLACK
WHITE

REM200
Rotomoulded Round Bin

Capacity	Dimensions
200 Litre	650 x 865mm



BLACK
WHITE

REM1000
Pallet Bin with Lid

Capacity	Dimensions
1000 Litre	1165 x 1165 x 1100mm



RETD L01GFL35
Galvanised Mobile Dolly

Hot Dip Galvanised Steel Angle Frame
50mm All Swivel Nylon Castors

Suit to	Dimensions
IH050/IH060/IH078	585 x 355 x 106mm



RETD L20GFL33
Galvanised Mobile Dolly

Hot Dip Galvanised Steel Angle Frame
100mm All Swivel Nylon Castors

Suit to	Dimensions
REM180	827 x 540 x 202mm



RETD L21GFL33
Galvanised Mobile Dolly

Hot Dip Galvanised Steel Angle Frame
75mm All Swivel Nylon Castors

Suit to	Dimensions
REM130 / REM170	680 x 450 x 202mm



RETD L22GFL33
Galvanised Mobile Dolly

Hot Dip Galvanised Steel Angle Frame
100mm All Swivel Nylon Castors

Suit to	Dimensions
REM322	910 x 607 x 212mm



RETD L23GFM64
Galvanised Mobile Dolly

Hot Dip Galvanised Steel Angle Frame
150mm 2 x Swivel Nylon & 2 x Fixed Rubber Castors

Suit to	Dimensions
REM422	1249 x 627 x 266mm



RETD L33GL33
Galvanised Mobile Dolly

Hot Dip Galvanised Steel Angle Frame
100mm All Swivel Nylon Castors

Suit to	Dimensions
REM600	1220 x 715 x 212mm



WHITE
BLUE

TSRT350
Food Grade Rotomoulded Tub

Capacity	Dimensions
350 Litre	758 x 1253 x 660mm



TSSLB
Spring Loaded Base Insert

Optional corflute or plastic top.

Capacity	Dimensions
50kg or 100kg Spring	700 x 400mm



TSRT-DOLLIE
TSRT Tub Dolly

Capacity	Dimensions
400 Litre	1130 x 600 x 600mm



SUITS IH323
Bread Crate



TSPD323
Plastic Dolly

Australian Made.
Standard colour Blue.
Food Grade Plastic.
Other colours available P.O.A.
Stainless steel castors to suit coolroom available P.O.A.

Model	Wheels	Load Capacity	Dimensions
RM80DY	100mm	140kg	620 x 710mm



YELLOW
WHITE
BLUE

SUITS IH060, IH051,
IH078 & IH315/310
Stack & Nest Tubs



TS10PD
Plastic Dolly

Food Grade Plastic.
Temperature Rating to - 20°C to 60°C.
Standard colours are Yellow, Blue & White.
Other colours available P.O.A.
Stainless steel castors to suit coolroom available P.O.A.
Suits Crate IH060, IH051 & IH078 (Sold Separately).

Model	Wheels	Load Capacity	Dimensions
TS10PD	100mm	150kg	620 x 400mm



PNEUMATIC, SOLID
WHEELS & PUNCTURE
PROOF AVAILABLE



TSPTS / TSPTP / TSPTPP
Piano Trolley

Ideal for moving furniture.
Optional Pneumatic or Solid Wheel Available.

Model	Wheels	Load Capacity	Size - Length x Width
TSPTS	200mm Solid	400kg	860 x 500mm
TSPTP	250mm	450kg	860 x 500mm
TSPTPP	250mm Puncture Proof	400kg	860 x 500mm



SUITS IH066
Fish Crate



RM74DY
Plastic Dolly

Australian Made.
Standard colour Blue.
Food Grade Plastic.
Other colours available P.O.A.
Stainless steel castors to suit coolroom available P.O.A.

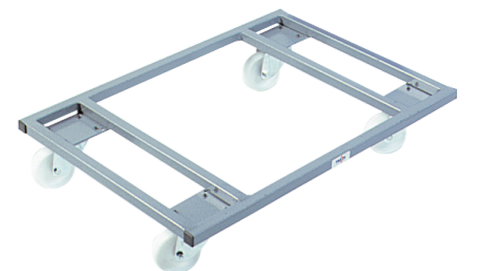
Model	Wheels	Load Capacity	Dimensions
RM74DY	100mm	140kg	710 x 450mm



TS10CD
Crate Dolly

4 x 100mm Castors.
Suits Crate IH060, IH051 & IH078 (Sold Separately).

Model	Load Capacity	Dimensions - Length x Width
TS10CD	80kg	600 x 360mm



TSFD
Furniture Dolly

Ideal for moving furniture.
4 x 100mm Castors.

Model	Load Capacity	Dimensions - Length x Width
TSFD	300kg	550 x 800mm

HOSPITALITY & PLASTIC STORAGE

HOSPITALITY & PLASTIC STORAGE

Micro Bins Storage of small components on bench tops and assembly lines.

Versatile small parts storage system. Suitable for a wide range of applications including warehouse, storerooms, hospitals, schools & manufacturing.



IH1000
Plastic Microbin Storage Container

Capacity	Max. Load	Dimensions
0.5 Litre	2kg	100 x 120 x 60mm



IH1001
Plastic Microbin Storage Container

Capacity	Max. Load	Dimensions
1 Litre	5kg	100 x 178 x 85mm



IH1002
Plastic Microbin Storage Container

Capacity	Max. Load	Dimensions
2.5 Litre	9kg	135 x 225 x 125mm



IH1003
Plastic Microbin Storage Container

Capacity	Max. Load	Dimensions
6 Litre	14kg	205 x 280 x 165mm



IH1004
Plastic Microbin Storage Container

Capacity	Max. Load	Dimensions
12 Litre	18kg	410 x 280 x 165mm

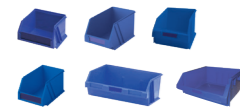


IH1006
Plastic Microbin Storage Container

Capacity	Max. Load	Dimensions
24 Litre	27kg	440 x 410 x 210mm

GLBMOB
Mobile Parts Trolley

For storage of small parts that need to be moved to multiple work areas.
Storage Bins - A popular combination of Bin Sizes is 16 Grey; 32 Yellow; 32 Green; 12 Blue; 24 Red. Any combination and quantity are available to be purchased separately.
2 fixed & 2 lockable swivel castors.

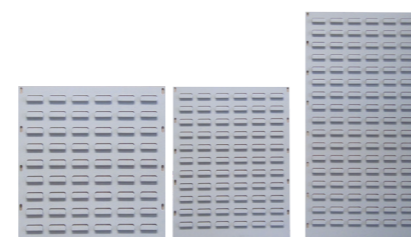


Handle	Dimensions
2	970 x 600 x 1585mm



Plastic Louvre Panels
Optional louvre panels sold separately. Also available in metal.

Model	Construction	Dimensions
1H082	Plastic	153 x 460mm
1H083	Plastic	460 x 460mm



Metal Louvre Panels
Optional louvre panels sold separately. Also available in metal.

Model	Construction	Dimensions
LV455	Metal	455 x 455mm
LV610	Metal	455 x 610mm
LV914	Metal	455 x 914mm



VISI-PAK® Bins
Solid plastic body with clear, removable compartments. Ideal for home & store merchandising.

Model	Dimensions
1H040	103 x 83 x 120mm
1H041	154 x 126 x 182mm
1H042	208 x 167 x 238mm



Drawer Organisers
Made from high impact styrene whilst the drawers are made from durable co-polymer. Ideal for tradespersons, handypersons or the office.

Model	Compartments	Dimensions
1H050	3 x 4 drawers	230 x 128 x 188mm
1H051	4 x 5 drawers	305 x 128 x 230mm



IH335
Small Spare Parts Storage
Standard tray includes two adjustable dividers for easy separation.

Divider to Suit	Dimensions
IH301 Divider	324 x 105 x 100mm



IH338
Small Spare Parts Storage
Standard tray includes two adjustable dividers for easy separation.

Divider to Suit	Dimensions
IH302 Divider	424 x 203 x 100mm



IH344
Small Spare Parts Storage
Standard tray includes two adjustable dividers for easy separation.

Divider to Suit	Dimensions
IH301 Divider	424 x 105 x 100mm



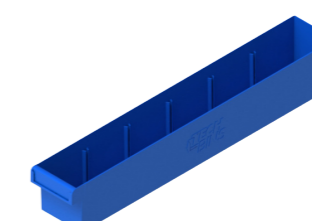
IH348
Small Spare Parts Storage
Standard tray includes two adjustable dividers for easy separation.

Divider to Suit	Dimensions
IH302 Divider	424 x 203 x 100mm



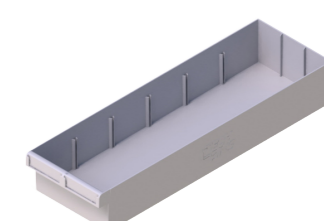
Small Spare Parts Storage Dividers
Standard tray includes two adjustable dividers for easy separation.

Model	Suit to
IH301	IH335 / IH344
IH302	IH338 / IH348



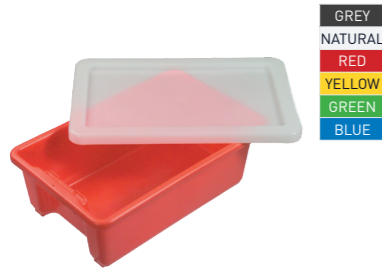
APTB27
Spare Parts Storage - Extra Long
Made from polypropylene with 20% Talc included for improved strength.

Dividers	Dimensions
5	626 x 100 x 100mm



APTB28
Spare Parts Storage - Extra Large
Made from polypropylene with 20% Talc included for improved strength.

Dividers	Dimensions
5	626 x 200 x 100mm



GREY
NATURAL
RED
YELLOW
GREEN
BLUE

IH060 Stack & Nest Crate

IH052 Lid White Only

Capacity	Ext. Dimensions	Int. Dimensions
32 Litre	645 x 413 x 210mm	597 x 362 x 203mm



GREY
NATURAL
RED
YELLOW
GREEN
BLUE

IH051 Stack & Nest Crate

IH052 Lid White Only

Capacity	Ext. Dimensions	Int. Dimensions
52 Litre	645 x 413 x 276mm	597 x 362 x 266mm



GREY
NATURAL
RED
YELLOW
GREEN
BLUE

IH078 Stack & Nest Crate

IH052 Lid White Only

Capacity	Ext. Dimensions	Int. Dimensions
68 Litre	645 x 413 x 397mm	597 x 362 x 381mm



BEIGE

IH004 Square Vented Produce Crate

Capacity	Ext. Dimensions	Int. Dimensions
84 Litre	585 x 522 x 350mm	560 x 495 x 320mm



NATURAL

IH016 Meat & Poultry Vented Crate

Capacity	Ext. Dimensions	Int. Dimensions
23 Litre	580 x 380 x 175mm	520 x 340 x 160mm



BLACK

IH033 Stack & Nest Mushroom Crate

Capacity	Ext. Dimensions	Int. Dimensions
21 Litre	580 x 385 x 130mm	539 x 344 x 123mm

NOTE: Not a Stock Item.
Minimum quantity applies to this product.



BLACK

IH060R2 Stack & Nest Recycled Crate

IH052R2 Lid Black Only

Moulded from recycled resin.
Not recommended for food.

Capacity	Ext. Dimensions	Int. Dimensions
32 Litre	645 x 413 x 210mm	597 x 362 x 203mm



BLACK

IH051R2 Stack & Nest Recycled Crate

IH052R2 Lid Black Only

Moulded from recycled resin.
Not recommended for food.

Capacity	Ext. Dimensions	Int. Dimensions
52 Litre	645 x 413 x 276mm	597 x 362 x 266mm



BLACK

IH078R2 Stack & Nest Recycled Crate

IH052R2 Lid Black Only

Moulded from recycled resin.
Not recommended for food.

Capacity	Ext. Dimensions	Int. Dimensions
68 Litre	645 x 413 x 397mm	597 x 362 x 381mm



NATURAL

IH035 Stack & Nest Vented Fish Crate

Capacity	Ext. Dimensions	Int. Dimensions
35 Litre	711 x 438 x 218mm	673 x 400 x 190mm



NATURAL

IH065 Stack & Nest Vented Fish Crate

Capacity	Ext. Dimensions	Int. Dimensions
54 Litre	711 x 438 x 310mm	673 x 400 x 276mm



NATURAL

IH095 Stack & Nest Vented Crate

Capacity	Ext. Dimensions	Int. Dimensions
32 Litre	642 x 480 x 156mm	584 x 432 x 127mm



NATURAL

IH090 Stack & Nest Solid Food Crate

Capacity	Ext. Dimensions	Int. Dimensions
32 Litre	575 x 400 x 215mm	510 x 400 x 215mm



NATURAL

IH066 Stack & Nest Solid Food Crate

Capacity	Ext. Dimensions	Int. Dimensions
54 Litre	711 x 438 x 310mm	672 x 400 x 276mm



NATURAL

IH068 Stack & Nest Solid Food Crate

Capacity	Ext. Dimensions	Int. Dimensions
118 Litre	950 x 460 x 435mm	770 x 365 x 365mm



YELLOW

IH317 Meat and Poultry Crate

Vented Sides Wall / Solid Base.

IH318 Meat and Poultry Crate

Vented Sides Wall / Vented Base.

Capacity	Ext. Dimensions	Int. Dimensions
32 Litre	580 x 390 x 190mm	505 x 305 x 165mm



GREY

IH323 Stack & Nest Bread Crate

Capacity	Ext. Dimensions	Int. Dimensions
48 Litre	694 x 600 x 150mm	662 x 578 x 126mm



ORANGE

IH506 Stack & Nest Produce Crate

Capacity	Ext. Dimensions	Int. Dimensions
22 Litre	525 x 336 x 240mm	442 x 280 x 228mm



NATURAL
RED
GREEN

IH2260 Stack & Nest Solid Crate

Capacity	Ext. Dimensions	Int. Dimensions
26 Litre	578 x 384 x 166mm	502 x 338 x 150mm



NATURAL
BLUE

IH2520 Stack & Nest Solid Crate

Capacity	Ext. Dimensions	Int. Dimensions
52 Litre	578 x 384 x 318mm	502 x 338 x 300mm



NATURAL
BLUE

IH2780 Stack & Nest Solid Crate

Capacity	Ext. Dimensions	Int. Dimensions
78 Litre	578 x 384 x 470mm	502 x 338 x 455mm



ORANGE
GREEN

IH512 Stack & Nest Produce Crate

Capacity	Ext. Dimensions	Int. Dimensions
36 Litre	525 x 336 x 345mm	430 x 272 x 333mm



NATURAL
GREEN

IH2267 Stack & Nest Vented Crate

Capacity	Ext. Dimensions	Int. Dimensions
26 Litre	578 x 384 x 166mm	502 x 338 x 150mm



NATURAL
BLUE

IH2527 Stack & Nest Vented Crate

Capacity	Ext. Dimensions	Int. Dimensions
52 Litre	578 x 384 x 318mm	502 x 338 x 300mm

HOSPITALITY & PLASTIC STORAGE

HOSPITALITY & PLASTIC STORAGE



NATURAL

IH007 Confectionery Tray

Capacity	Ext. Dimensions	Int. Dimensions
29 Litre	712 x 448 x 95mm	680 x 416 x 76mm



NATURAL

IH047 Stacking Crate

Capacity	Ext. Dimensions	Int. Dimensions
21 Litre	660 x 334 x 121mm	610 x 305 x 114mm



BLACK

IH047R2 Recycled Stacking Crate

Capacity	Ext. Dimensions	Int. Dimensions
21 Litre	660 x 334 x 121mm	610 x 305 x 114mm



NATURAL

IH006 Vented Confectionery Tray

Capacity	Ext. Dimensions	Int. Dimensions
29 Litre	712 x 448 x 95mm	680 x 416 x 76mm



GREY

IH017 Heavy Duty Vented Crate

Capacity	Ext. Dimensions	Int. Dimensions
20 Litre	400 x 280 x 245mm	360 x 245 x 240mm



GREY

IH025 Mash Base Crate

Capacity	Ext. Dimensions	Int. Dimensions
25 Litre	580 x 385 x 166mm	518 x 335 x 140mm



NATURAL

IH072 Stacking Crate

Capacity	Ext. Dimensions	Int. Dimensions
36 Litre	565 x 387 x 203mm	553 x 355 x 190mm



GREY

IH024 Auto Crate

Capacity	Ext. Dimensions	Int. Dimensions
25 Litre	580 x 385 x 166mm	518 x 335 x 140mm



NATURAL

IH046 Stacking Crate

Capacity	Ext. Dimensions	Int. Dimensions
46 Litre	629 x 400 x 216mm	597 x 368 x 210mm



GREY

IH026 Stacking Vented Crate

Capacity	Ext. Dimensions	Int. Dimensions
50 Litre	580 x 385 x 320mm	518 x 335 x 295mm



GREY

IH027 Vented Side Access Crate

Capacity	Ext. Dimensions	Int. Dimensions
50 Litre	580 x 385 x 320mm	518 x 335 x 295mm



NATURAL

IH073 Stacking Vented Crate

Capacity	Ext. Dimensions	Int. Dimensions
36 Litre	565 x 387 x 203mm	553 x 355 x 190mm



GREEN
BLUE

IH099 Slab Side Crate

Capacity	Ext. Dimensions	Int. Dimensions
29 Litre	356 x 356 x 292mm	331 x 331 x 279mm



WHITE
BLUE

IH305 Small Tote Box

IH308 Lid White Only

Capacity	Ext. Dimensions	Int. Dimensions
13 Litre	432 x 324 x 127mm	387 x 286 x 120mm



WHITE
BLUE

IH306 Medium Tote Box

IH308 Lid White Only

Capacity	Ext. Dimensions	Int. Dimensions
21 Litre	432 x 324 x 203mm	387 x 286 x 197mm



GREY

IH125 Vented Crate

Capacity	Ext. Dimensions	Int. Dimensions
12.5 Litre	385 x 290 x 165mm	330 x 235 x 148mm



ORANGE

IH037 Lug Box

Capacity	Ext. Dimensions	Int. Dimensions
44 Litre	538 x 362 x 334mm	460 x 324 x 253mm



YELLOW

IH098 Stacking Crate

Capacity	Ext. Dimensions	Int. Dimensions
50 Litre	572 x 382 x 318mm	540 x 350 x 295mm



WHITE
BLUE

IH307 Large Tote Box

IH308 Lid White Only

Capacity	Ext. Dimensions	Int. Dimensions
33 Litre	432 x 324 x 305mm	387 x 286 x 298mm



NATURAL

IH220 Large Tote Box

IH221 Lid White Only

Capacity	Ext. Dimensions	Int. Dimensions
42 Litre	520 x 350 x 280mm	475 x 325 x 275mm

HOT STAMPING - Container Identification

Your department or company name stamped on containers helps ensure they are returned to you. Container stamping is available in a range of colours. Stamping is permanent and can't be washed off.



BLACK

IH160 Milk Crate

Capacity	Ext. Dimensions	Int. Dimensions
32 Litre	362 x 362 x 325mm	305 x 305 x 310mm



ORANGE
BLUE

IH300 Vented Lug Crate

Capacity	Ext. Dimensions	Int. Dimensions
66 Litre	610 x 419 x 312mm	571 x 381 x 305mm



GREY

IH984 Vented Base

Capacity	Ext. Dimensions	Int. Dimensions
44 Litre	735 x 535 x 150mm	690 x 485 x 135mm



WHITE

IH008 Commercial Tray

Capacity	Ext. Dimensions	Int. Dimensions
N/A	455 x 343 x 32mm	420 x 305 x 25mm



WHITE

IH009 Small Tray

Capacity	Ext. Dimensions	Int. Dimensions
N/A	456 x 318 x 57mm	422 x 292 x 55mm



GREY

IH310 Handee Bin

IH312 Lid White Only

Capacity	Ext. Dimensions	Int. Dimensions
10 Litre	385 x 300 x 130mm	355 x 270 x 125mm



GREY

IH3026 Solid Swing Bar Crate

Capacity	Ext. Dimensions	Int. Dimensions
23 Litre	578 x 386 x 166mm	495 x 327 x 140mm



GREY

IH3046 Vented Swing Bar Crate

Capacity	Ext. Dimensions	Int. Dimensions
46 Litre	578 x 388 x 280mm	518 x 322 x 253mm



GREY

IH3021 Vented Swing Bar Crate

Capacity	Ext. Dimensions	Int. Dimensions
26 Litre	579 x 386 x 166mm	495 x 327 x 140mm



RED
NATURAL
BLUE

IH048 Nesting Crate

IH158 Lid White Only

Capacity	Ext. Dimensions	Int. Dimensions
16 Litre	457 x 318 x 165mm	419 x 279 x 152mm



RED
NATURAL
BLUE

IH042 Nesting Crate

IH158 Lid White Only

Capacity	Ext. Dimensions	Int. Dimensions
27 Litre	457 x 318 x 260mm	419 x 279 x 255mm



NATURAL

IH077 Liver Tray

Capacity	Ext. Dimensions	Int. Dimensions
11 Litre	514 x 213 x 130mm	483 x 178 x 127mm



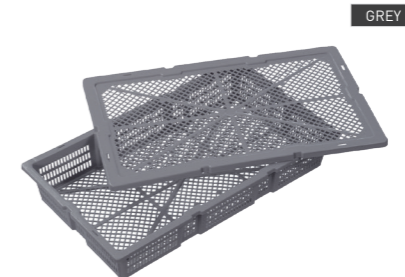
YELLOW

NOTE: Not a Stock Item.

Minimum quantity applies to this product.

IH3138 Vented Swing Bar Crate

Capacity	Ext. Dimensions	Int. Dimensions
38 Litre	578 x 387 x 240mm	500 x 300 x 212mm

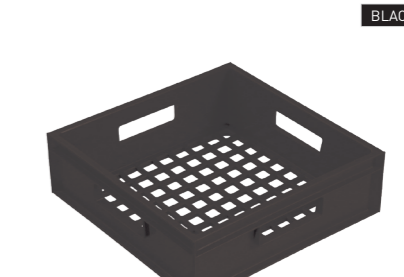


GREY

IH001 Vented Prawn Crate

IH002 Lid Grey Only

Capacity	Ext. Dimensions	Int. Dimensions
15 Litre	600 x 352 x 96mm	565 x 302 x 89mm



BLACK

IH012 Vented Seedling Tray

Capacity	Ext. Dimensions	Int. Dimensions
N/A	357 x 357 x 112mm	328 x 328 x 105mm



RED
NATURAL

IH044 Liver Tray

Capacity	Ext. Dimensions	Int. Dimensions
20 Litre	584 x 267 x 178mm	533 x 229 x 165mm



ORANGE
NATURAL

IH059 Nesting Crate

IH015 Lid White Only

Capacity	Ext. Dimensions	Int. Dimensions
22 Litre	527 x 381 x 140mm	489 x 343 x 127mm



ORANGE
NATURAL
BLUE

IH089 Nesting Crate

IH014 Lid White Only

Capacity	Ext. Dimensions	Int. Dimensions
13 Litre	430 x 323 x 127mm	394 x 285 x 108mm



BLUE

IH3011 Security Crate with Lid

Capacity	Ext. Dimensions	Int. Dimensions
50 Litre	580 x 380 x 325mm	520 x 350 x 295mm



BLUE

IH3013 Security Crate with Lid

Capacity	Ext. Dimensions	Int. Dimensions
32 Litre	575 x 380 x 200mm	515 x 350 x 185mm



NATURAL

IH091 Oven Tub

Capacity	Ext. Dimensions	Int. Dimensions
54 Litre	700 x 600 x 340mm	635 x 535 x 320mm



CLEAR

IH310 Handee Bin

IH312 Lid White Only

Capacity	Ext. Dimensions	Int. Dimensions
10 Litre	385 x 300 x 130mm	355 x 270 x 125mm



CLEAR

IH315 Handee Bin

IH312 Lid White Only

Capacity	Ext. Dimensions	Int. Dimensions
15 Litre	385 x 300 x 190mm	355 x 270 x 185mm



NATURAL
BLACK

IH539R2 Recycled Nesting Tub

Capacity	Ext. Dimensions	Int. Dimensions
200 Litre	990 x 660 x 470mm	770 x 440 x 460mm



GREY

**TS10CD
Crate Dolly**

Suits Crate IH060, IH051 & IH078 (Sold Separately).

Load Capacity	Dimensions
80kg	600 x 360mm



YELLOW
WHITE
BLUE

TS10PD Plastic Dolly

Wheels	Load Capacity	Dimensions
100mm	150kg	620 x 400mm



BLUE

**RM74DY
Plastic Dolly**

Food Grade Plastic.

Load Capacity	Dimensions
140kg	710 x 450mm



WHITE
RED

N151 Bucket
N148 Lid White Only

Capacity	Dimensions - Diameter x Height
13 Litre	300 x 295mm



WHITE

N258 Bucket
N073 Lid White Only

Capacity	Dimensions - Diameter x Height
18 Litre	360 x 295mm



WHITE
RED
BLUE

N075 Bucket
N073 Lid White Only

Capacity	Dimensions - Diameter x Height
22 Litre	360 x 360mm



RED
NATURAL

IP015 Bucket
IP016 Lid White Only

Capacity	Dimensions - Diameter x Height
67 Litre	540 x 508mm

AVAILABLE DOLLY
TS01518 Dolly
Suits IP015 and IP018.



NATURAL
GREEN

IP018 Bucket
IP016 Lid White Only

Capacity	Dimensions - Diameter x Height
84 Litre	540 x 610mm

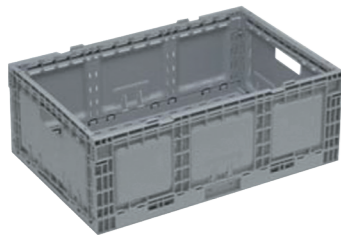
AVAILABLE DOLLY
TS01518 Dolly
Suits IP015 and IP018.



RED
NATURAL

IP025 Bucket
IP026 Lid White Only

Capacity	Dimensions - Diameter x Height
113 Litre	637 x 455mm



GREY

IH1210 Folding Crate

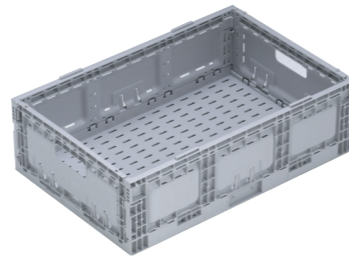
Capacity	Ext. Dimensions	Int. Dimensions
41 Litre	578 x 385 x 210mm	553 x 357 x 203mm



GREY

IH1129 Folding Crate

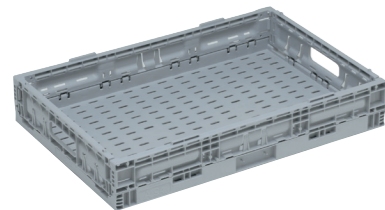
Capacity	Ext. Dimensions	Int. Dimensions
12 Litre	385 x 289 x 129mm	360 x 261 x 122mm



GREY

IH1172 Folding Crate

Capacity	Ext. Dimensions	Int. Dimensions
33 Litre	578 x 385 x 172mm	553 x 357 x 165mm



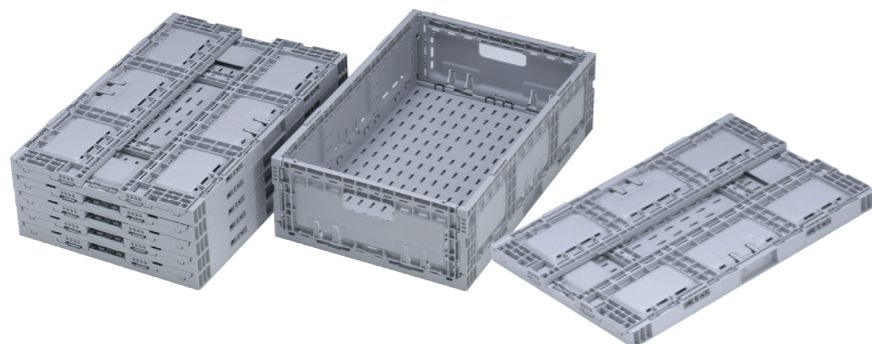
GREY

IH1094 Folding Crate

Capacity	Ext. Dimensions	Int. Dimensions
17 Litre	578 x 385 x 94mm	553 x 357 x 87mm

FOLDING CRATES

When folded, the containers are only 34mm high..



AVAILABLE SEPARATELY

Choose Your Lid



MSLID
Injection Moulded Lid



MSLIDE
Polyurethane Eco Lid



MS7800 Mega Bin - Solid

Designed specifically for the Australian market, the Mega Bin is capable of holding up to half a tonne and has the same footprint dimensions as an Australian pallet. Positive interlocking foot design allows safe stacking up to ten high.

Capacity	Ext. Dimensions	Int. Dimensions
780 Litre	1165 x 1165 x 780mm	1082 x 1082 x 650mm

AVAILABLE SEPARATELY

Choose Your Lid



MSLID
Injection Moulded Lid



MSLIDE
Polyurethane Eco Lid



MS7810 Mega Bin - Vented

Designed specifically for the Australian market, the Mega Bin is capable of holding up to half a tonne and has the same footprint dimensions as an Australian pallet. Positive interlocking foot design allows safe stacking up to ten high.

Capacity	Ext. Dimensions	Int. Dimensions
780 Litre	1165 x 1165 x 780mm	1082 x 1082 x 650mm



MS5810 Mega Bin - Vented

Designed specifically for the Australian market, and has the same footprint dimensions as an Australian pallet. Positive interlocking foot design allows safe stacking up to ten high.

Capacity	Ext. Dimensions	Int. Dimensions
528 Litre	1165 x 1165 x 580mm	1082 x 1082 x 450mm

AVAILABLE SEPARATELY

Choose Your Lid



MSLID
Injection Moulded Lid



MSLIDE
Polyurethane Eco Lid



MS7800T Mega Bin with Tipping Bar - Solid

Designed specifically for the Australian market, the Mega Bin is capable of holding up to half a tonne and has the same footprint dimensions as an Australian pallet. Positive interlocking foot design.

Capacity	Ext. Dimensions	Int. Dimensions
780 Litre	1165 x 1165 x 780mm	1082 x 1082 x 650mm



MS4410 Mega Bin - Vented

Designed specifically for the Australian market, and has the same footprint dimensions as an Australian pallet. Positive interlocking foot design allows safe stacking up to ten high.

Capacity	Ext. Dimensions	Int. Dimensions
353 Litre	1165 x 1165 x 440mm	1082 x 1082 x 310mm



MS123VH Foldable Half Bin - Vented

Designed specifically for the Australian market, and has the same footprint dimensions as an Australian pallet. Suit for fruit and vegetable movement and most retail environments. Folded Dimensions: 1162 x 1162 x 280mm.

Capacity	Ext. Dimensions	Int. Dimensions
470 Litre	1162 x 1162 x 560mm	1090 x 1080 x 400mm



HMT1160KWS Monstar Collapsible Mega Bin - Solid

Designed specifically for the Australian market, and has the same footprint dimensions as an Australian pallet. Outstanding solution for agricultural and horticultural picking industries. Folded Dimensions: 1160 x 1160 x 300mm.

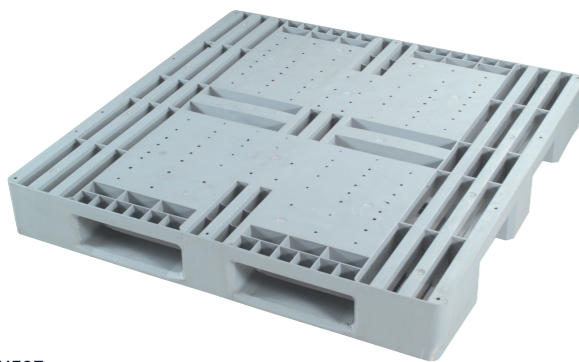
Capacity	Ext. Dimensions	Int. Dimensions
750 Litre	1160 x 1160 x 800mm	1160 x 1160 x 500mm



HMT1160KSV Monstar Collapsible Mega Bin - Vented

Designed specifically for the Australian market, and has the same footprint dimensions as an Australian pallet. Outstanding solution for agricultural and horticultural picking industries. Folded Dimensions: 1160 x 1160 x 300mm.

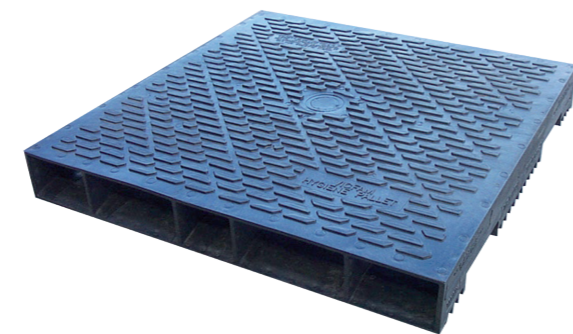
Capacity	Ext. Dimensions	Int. Dimensions
750 Litre	1160 x 1160 x 800mm	1160 x 1160 x 500mm



IH537 VIPALLET

A cost effective alternative pallet for food processing, pharmaceuticals, groceries, printing, textiles, chemicals, beverages, tanning and general industrial applications.

Static Capacity	Beam Rack Capacity	Dimensions	Weight
4000kg	1000kg	1168 x 1168mm	16.8kg



NS900 Plastic Pallet

A cost effective alternative pallet for food processing, pharmaceuticals, groceries, printing, textiles, chemicals, beverages, tanning and general industrial applications.

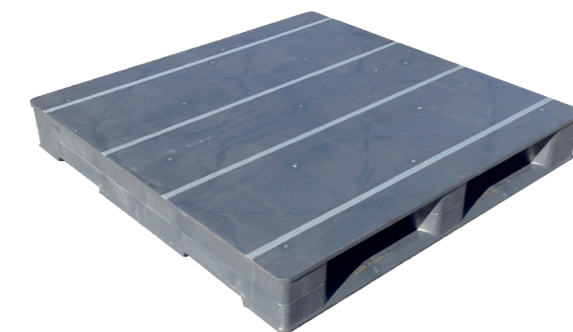
Static Capacity	Beam Rack Capacity	Dimensions	Weight
8000kg	2000kg	1170 x 1170mm	34kg



EC01160L VIPALLET

Heavy Duty, 100% Recycled Material.

Static Capacity	Beam Rack Capacity	Dimensions	Weight
10000kg	2000kg	1165 x 1165mm	17.6kg



EC01165MS Heavy Duty Pallet

Heavy Duty, Smooth Flat Deck Surface with Anti Slip. Available in 100% Recycled or Virgin Material.

Static Capacity	Beam Rack Capacity	Dimensions	Weight
10000kg	2000kg	1165 x 1165mm	24.3kg



Shelving - 5 Shelf Post Style with ABS Real Tuff Shelves

Available shelf lengths from 600mm to 1800mm in increments of 150mm. Welded 32mm x 2.5mm roll formed section frames. Width can be 300, 450, 525 or 600mm deep. Finishes available are zinc lacquered, polished stainless steel, hot dip galvanised or powder coated.



Shelving - 5 Shelf Post Style with Wire Grid

Available shelf lengths from 600mm to 1800mm in increments of 150mm. Strong wire shelves allow maximum airflow. Width can be 300, 375, 450, 525 or 600mm deep. Welded 32mm x 2.5mm roll formed section frames with wire grid of 4mm. Finishes available are zinc lacquered, polished stainless steel & powder coated.



Half Size Rack with 30D bins



Half Size Rack with #4 bins

Action Rack

Half Size 1015 x 1800mm

ACTION-RACK is a unique racking system, exclusive to Reflex Equip. It features a sturdy galvanised steel frame which takes a range of lift out plastic bins. A versatile approach to accessible storage and display suiting many applications. Optional castors can be fitted for greater manoeuvrability.

Model	Levels	Bin Type	Total Bins
RE S AS1530	5	#30 Bins	15
RE S AS1530D	5	#30D Bins	15
RE S AS1804	6	#4 Bins	18



Full Size Rack with #4 bins



Full Size Rack with #10 bins (optional lids)



Full Size Rack with #30 & #30D bins, Mobile option

Action Rack

Full Size 2022 x 1800mm

ACTION-RACK is a unique racking system, exclusive to Reflex Equip. It features a sturdy galvanised steel frame which takes a range of lift out plastic bins. A versatile approach to accessible storage and display suiting many applications. Optional castors can be fitted for greater manoeuvrability.

Model	Levels	Bin Type	Total Bins
RE S AL1207	4	#7 Bins	12
RE S AL1210	4	#10 Bins	12
RE S AL3030	5	#30 Bins	30
RE S AL3030D	5	#30D Bins	30
RE S AL3604	6	#4 Bins	36



MDF Work Bench
Megabench 1200mm Long

The all purpose, steel framed MegaBench workbenches are made for years of tough use in your factory, workshop or warehouse.

Model	Bin Type	Top Desk
RE MB12006802	1200x 750 x 680	18mm MDF Board
RE MB12008202	1200x 750 x 820	18mm MDF Board
RE MB12009602	1200x 750 x 960	18mm MDF Board

Work Bench Optional Tools

Customise your MegaBench with our large range of options and extras that are available. Don't hesitate to contact us for expert advice on making your bench mobile by adding castors.

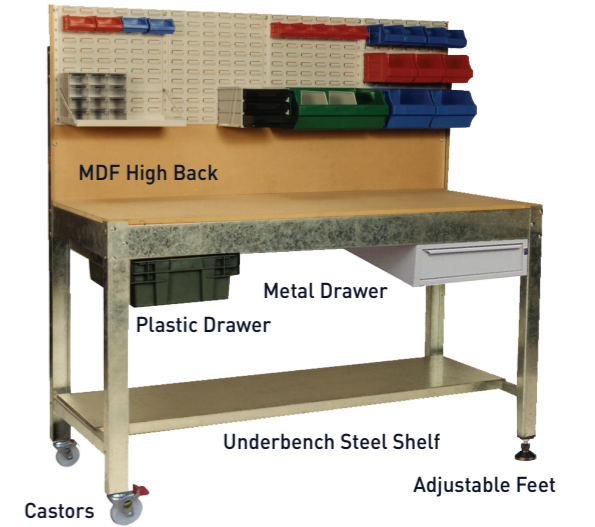
For Megabench 1200mm Long

Model	Descriptions
RE MB 1211	Low Back
RE MB 1212	High Back
RE MB 1210	Underside Shelf
RE MB 1213	Overbench Shelf

For Megabench 1800mm Long

Model	Descriptions
RE MB 1811	Low Back
RE MB 1812	High Back
RE MB 1810	Underside Shelf
RE MB 1813	Overbench Shelf

Louvre panel & Accessories



MDF Work Bench
Megabench 1800mm Long

The all purpose, steel framed MegaBench workbenches are made for years of tough use in your factory, workshop or warehouse.

Model	Bin Type	Top Desk
RE MB18006802	1800x 750 x 680	18mm MDF Board
RE MB18008202	1800x 750 x 820	18mm MDF Board
RE MB18009602	1800x 750 x 960	18mm MDF Board

PW1830 Personal Wardrobe

Personal hang rail & mirror.
Quality powdercoated finish.
Flush mounted doors with 180 degree opening capacity.
Quality steel with reinforced doors.
3 Point locking mechanism.
10 Year warranty.



Features	Specifications
Dimensions	914 x 463 x 1830mm
Door	Full Length Double Doors
Lock	3 Point Mechanism with Key



MDF Work Bench
Megabench 2400mm Long

The all purpose, steel framed MegaBench workbenches are made for years of tough use in your factory, workshop or warehouse.

Model	Bin Type	Top Desk
RE MB24006802	2400x 750 x 680	18mm MDF Board
RE MB24008202	2400x 750 x 820	18mm MDF Board
RE MB24009602	2400x 750 x 960	18mm MDF Board

Various Combos Available
1 - 8 Door

Lockers

Available in 2 widths - 305mm & 380mm.
Quality Powdercoated Finish.
Flush mounted doors with 180 degree opening capacity.
Card Holder Provision for easy identification.
Pad Latch and Key Lock options available.
10 Year Warranty.



Features	Specifications
Dimensions	914 x 463 x 1830mm
Door	Various Combos Available - 1 Door to 8 Door

CUSTOM SHELVING & STORAGE SYSTEM DESIGN & MANUFACTURE

CELEBRATING **28** YEARS
IN AUSTRALIA



Team Systems custom design & manufacture to suit your warehouse.

Team Systems is committed to providing our customers with material handling and warehouse equipment solutions that emphasise safety and efficiency. We offer our professional knowledge on warehousing processes tailored to your needs.

Our national distribution of high quality products across all locations in Melbourne, Sydney, Brisbane and Perth provides not only logistical advantages for our customers but confidence in after market support at local level with experienced staff.

Our history in developing products for the Australian and New Zealand markets for over 25 years has helped our customers improve their processes with custom solutions.

Call us to arrange a site visit from one of our experienced sales engineers who will design a personalised solution for your needs.

- WORK BENCHES
- WORK TABLES
- FLEXITool BOARD SYSTEM
- COOL ROOM SHELVING
- LONGSPAN SHELVING EQUIPMENT
- SPECIALIZED TROLLEYS
- METAL WORK
- CONVEYOR SYSTEMS
- PLATFORMS AND WALK OVERS

